

Roof Top Tent Annex



Storage and Handling Guidelines

- Do not store the annex wet.
- Keep zippers lubed periodically.

Care Instructions

- Clean only with cold water and a soft brush - do not use soap or detergent, this will remove the waterproofing compounds.
- Do not expose to petrol, oil or solvents.

OMIX-ADA® TECHNICAL SUPPORT

PHONE: M-F 8am - 5pm EST 1-800-449-6649 | **EMAIL:** techsupport@omix-ada.com

FOR WARRANTY INFORMATION VISIT: www.Omix-Ada.com

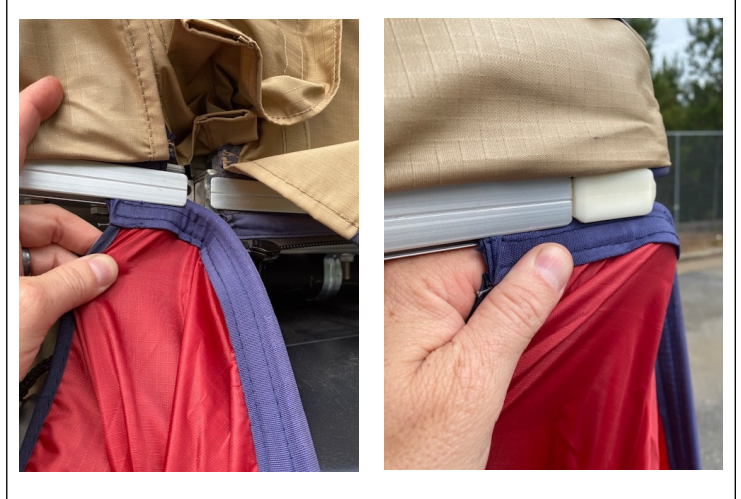


OMIX-ADA, Inc.

460 HORIZON DR. SUITE 400 | SUWANEE, GA 30024 | PHONE: 770-614-6101 | FAX: 770-614-6069 | info@omix-ada.com

Roof Top Tent Annex

1. Slide the end with the plastic tube into the track on the bottom of your Roof Top Tent. Continue to slide the Annex around the plastic corner.

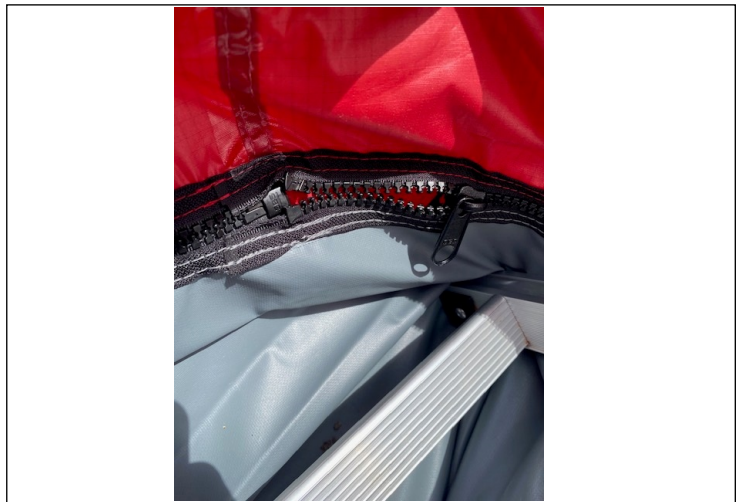


2. The back will now hang down as shown. The zipper shown in the middle of the drop down, will be fully zipped after the annex is installed in the tracks and allows you to access the inside of your vehicle while in the Annex.

Note: The base of the ladder will sit inside of the Annex.



3. Connect the zippers on the Annex to the zippers on the floor of the tent then zip completely.





OMIX-ADA, Inc.

460 HORIZON DR. SUITE 400 | SUWANEE, GA 30024 | PHONE: 770-614-6101 | FAX: 770-614-6069 | info@omix-ada.com

Roof Top Tent Annex

4. Once the Annex is completely zipped onto the tent floor, spread the floor out then drive the included stakes into the ground.

